

1-BEDROOM

TYPE 1BR

41 sqm / 441 sqft

#02-01 to #39-01 (21 STIRLING ROAD)
 #02-15 to #39-15 (23 STIRLING ROAD)
 #02-24 to #37-24 (25 STIRLING ROAD)



1-BEDROOM + STUDY

TYPE 1BR-S

47 sqm / 506 sqft

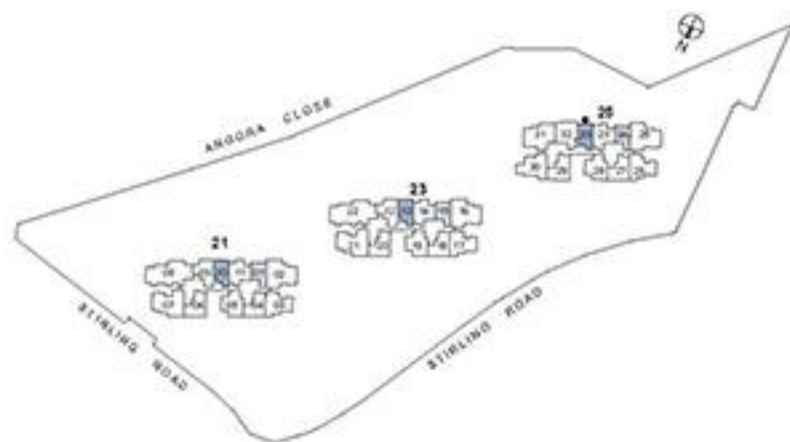
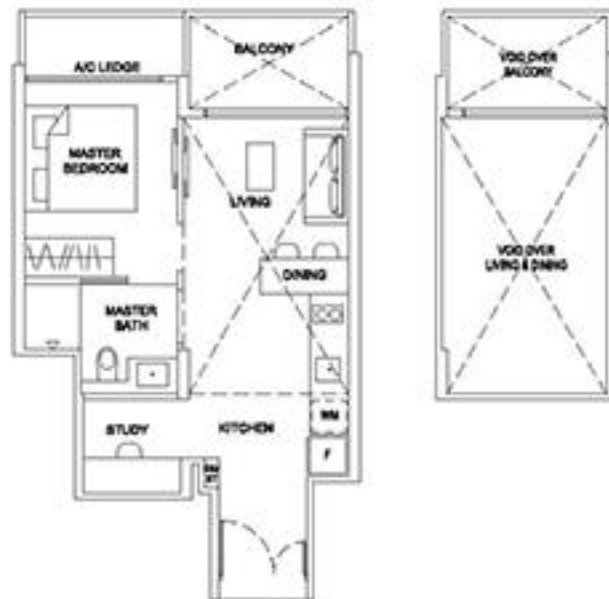
#02-10 to #39-10 (21 STIRLING ROAD)
 #02-13 to #39-13 (23 STIRLING ROAD)
 #02-33 to #37-33 (25 STIRLING ROAD)



TYPE 1BR-S-R

66 sqm / 710 sqft
 (inclusive of 19 sqm of void area)

#40-10 (21 STIRLING ROAD)
 #40-13 (23 STIRLING ROAD)
 #38-32 (25 STIRLING ROAD)*



TYPE 2BR-C1

59 sqm / 635 sqft

#02-09 to #39-09 (21 STIRLING ROAD)
 #02-12 to #39-12 (23 STIRLING ROAD)



2-BEDROOM

TYPE 2BR-C2a

58 sqm / 624 sqft

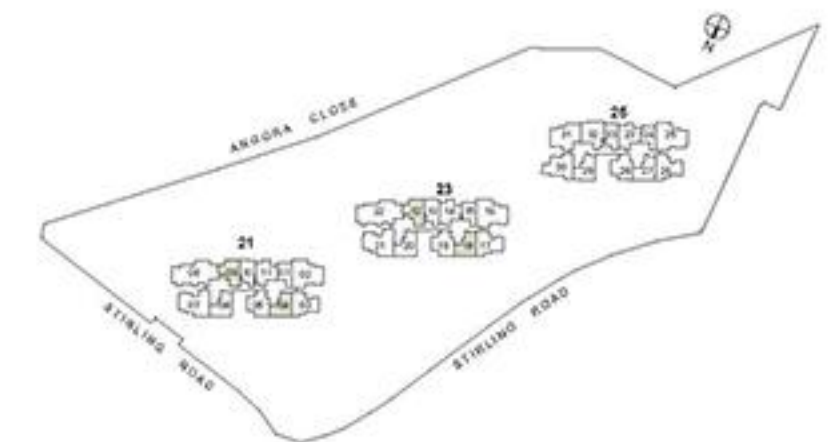
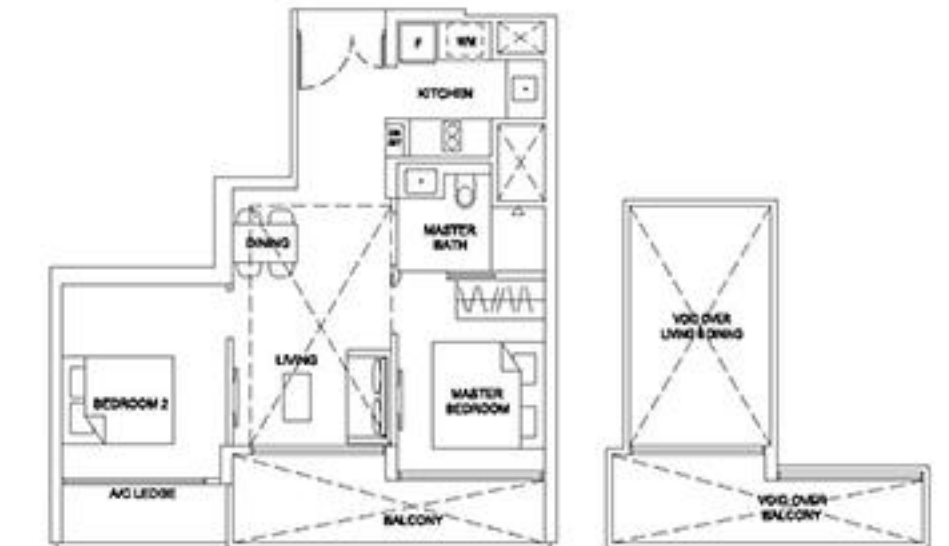
#02-04 to #39-04 (21 STIRLING ROAD)
 #02-18 to #39-18 (23 STIRLING ROAD)



TYPE 2BR-C2a-R

76 sqm / 818 sqft
 (inclusive of 18 sqm of void area)

#40-04 (21 STIRLING ROAD)
 #40-18 (23 STIRLING ROAD)



2-BEDROOM

TYPE 2BR-C2b

59 sqm / 635 sqft

#02-27 to #37-27 (25 STIRLING ROAD)



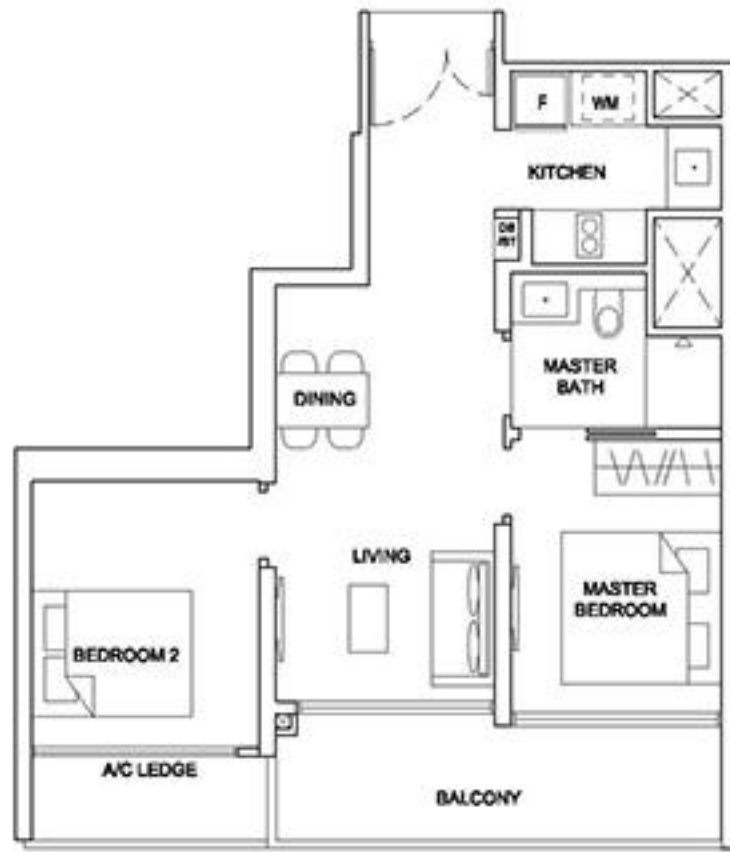
TYPE 2BR-C3

61 sqm / 657 sqft

#02-06 to #39-06 (21 STIRLING ROAD)

#02-20 to #39-20 (23 STIRLING ROAD)

#02-29 to #37-29 (25 STIRLING ROAD)



TYPE 2BR-P1

64 sqm / 689 sqft

#02-05 to #39-05 (21 STIRLING ROAD)

#02-19 to #39-19 (23 STIRLING ROAD)

#02-28 to #37-28 (25 STIRLING ROAD)



2-BEDROOM PREMIUM

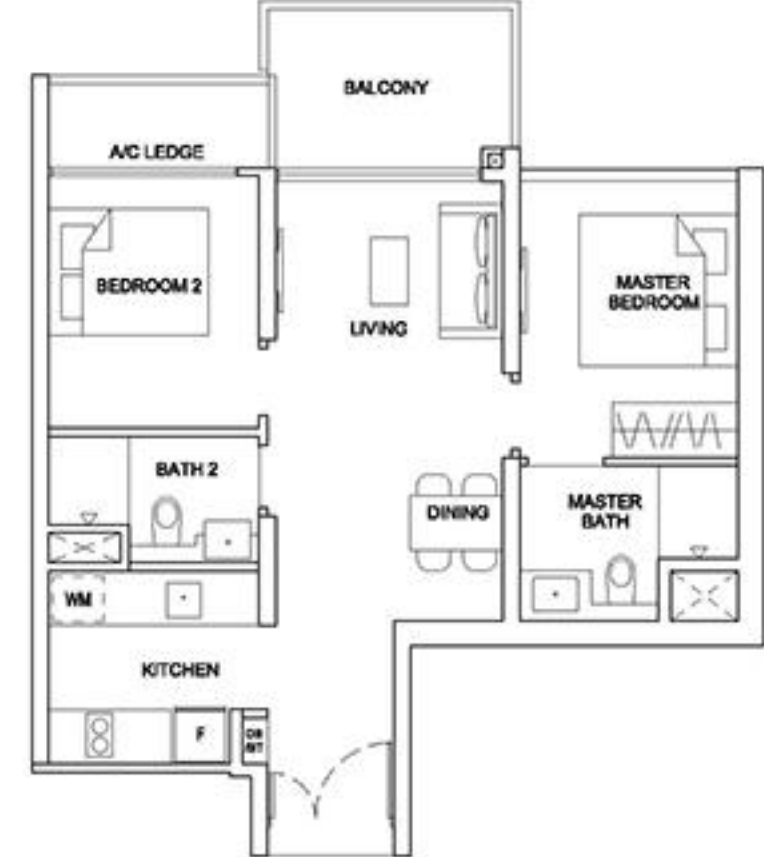
TYPE 2BR-P2

63 sqm / 678 sqft

#02-11 to #39-11 (21 STIRLING ROAD)

#02-14 to #39-14 (23 STIRLING ROAD)

#02-23 to #37-23 (25 STIRLING ROAD)

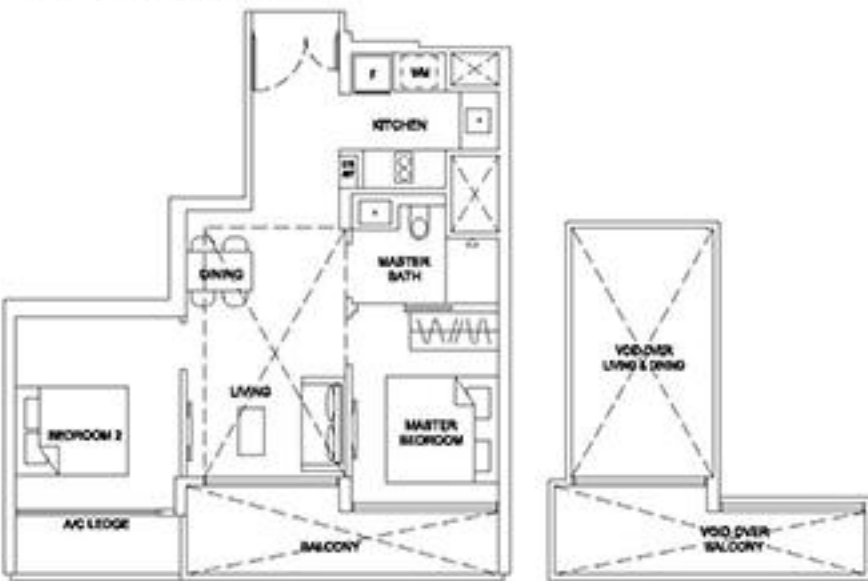


TYPE 2BR-C2b-R

78 sqm / 840 sqft

(inclusive of 19 sqm of void area)

#38-27 (25 STIRLING ROAD)

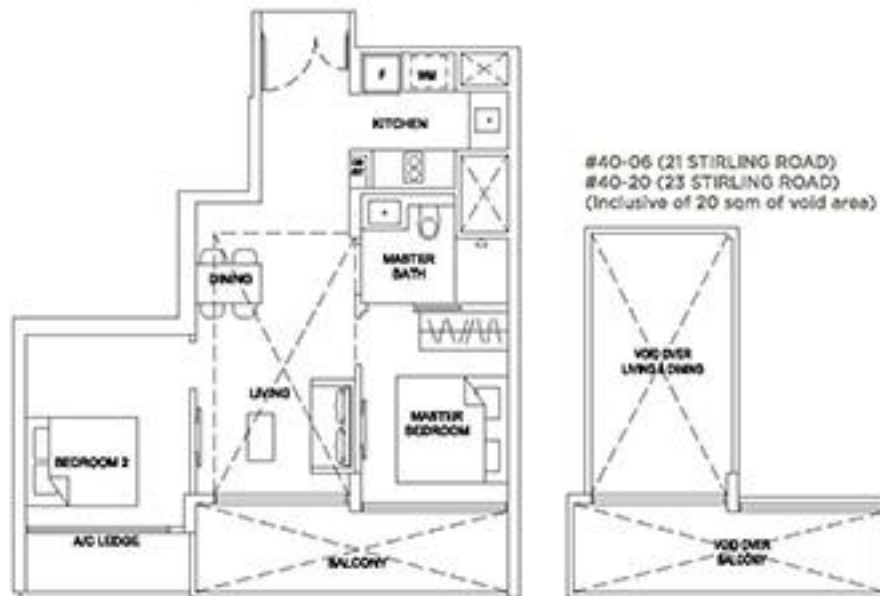


TYPE 2BR-C3-R

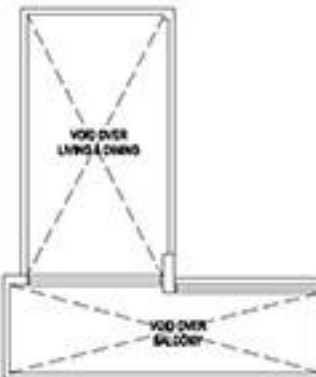
#40-06 (21 STIRLING ROAD) - 81 sqm / 872 sqft

#40-20 (23 STIRLING ROAD) - 81 sqm / 872 sqft

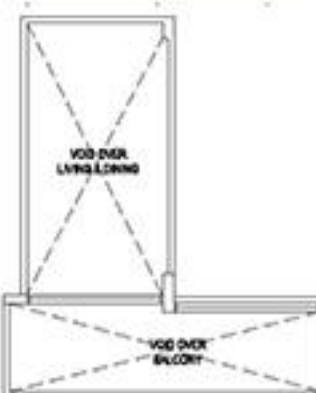
#38-29 (25 STIRLING ROAD) - 82 sqm / 883 sqft



#40-06 (21 STIRLING ROAD)
#40-20 (23 STIRLING ROAD)
(inclusive of 20 sqm of void area)



#38-29 (25 STIRLING ROAD)
(inclusive of 21 sqm of void area)



TYPE 2BR-P1-R

84 sqm / 904 sqft

(inclusive of 20 sqm of void area)

#40-05 (21 STIRLING ROAD)
#40-19 (23 STIRLING ROAD)
#38-28 (25 STIRLING ROAD)

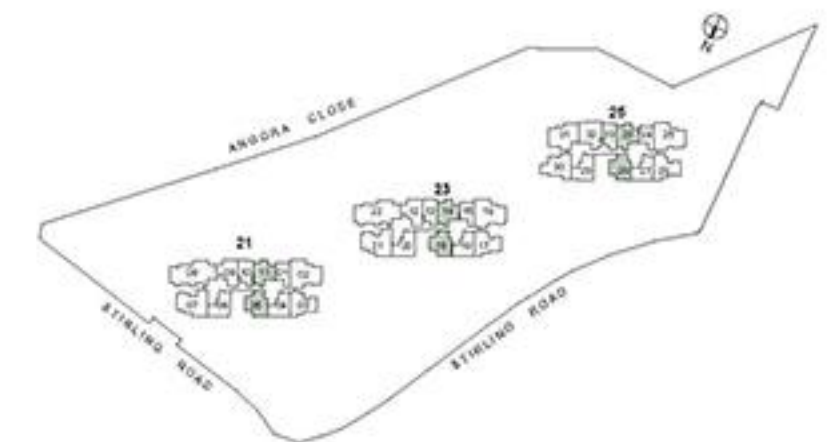
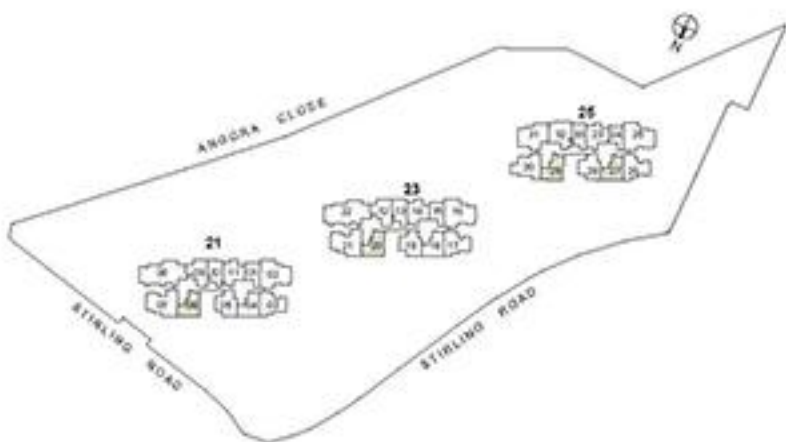
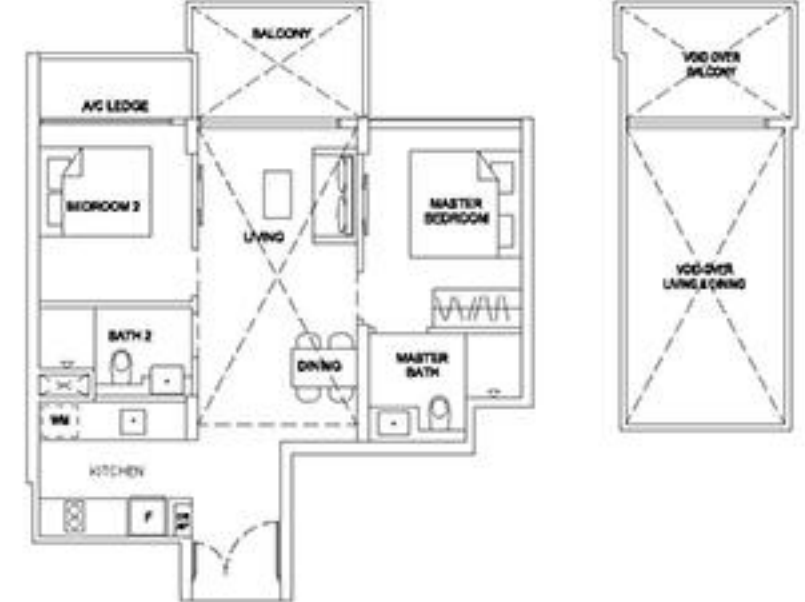


TYPE 2BR-P2-R

84 sqm / 904 sqft

(inclusive of 21 sqm of void area)

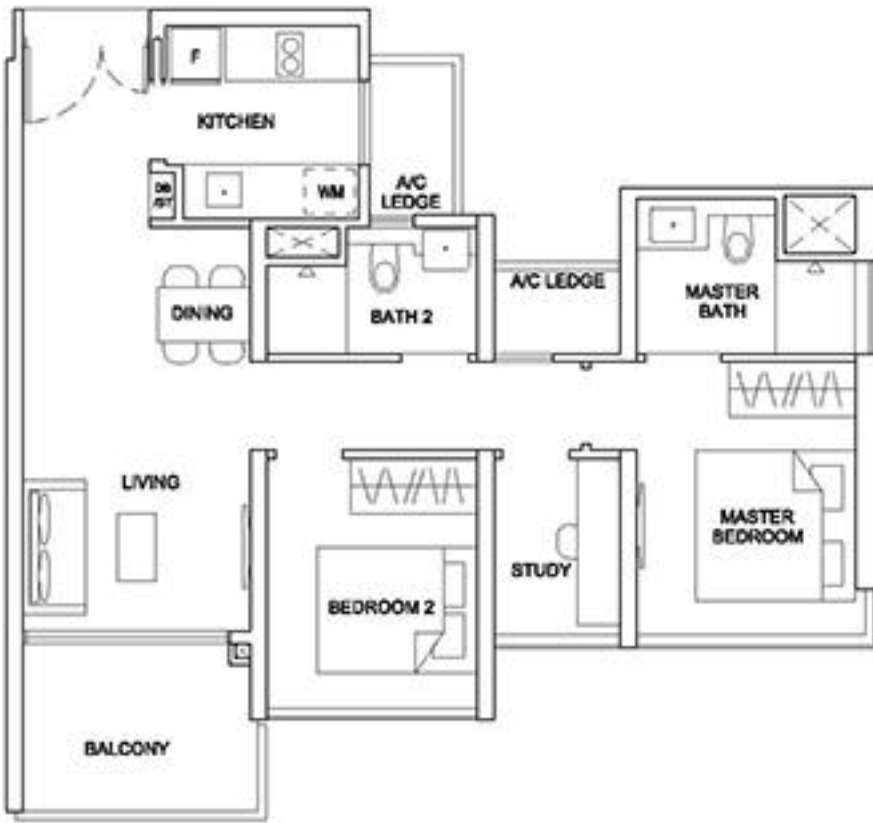
#40-11 (21 STIRLING ROAD)
#40-14 (23 STIRLING ROAD)
#38-23 (25 STIRLING ROAD)



2-BEDROOM + STUDY

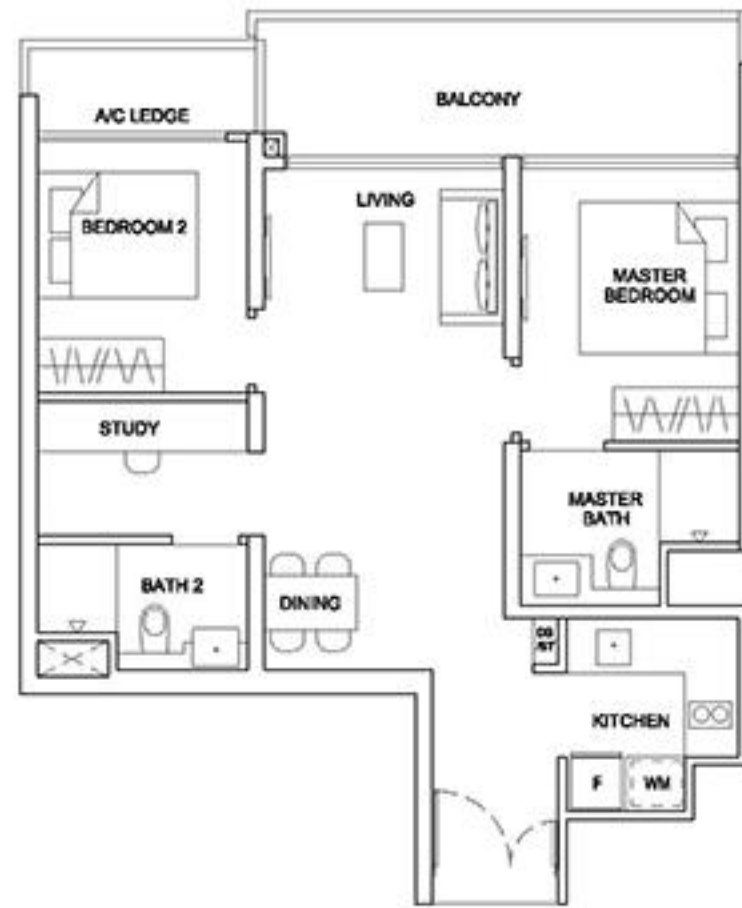
TYPE 2BR-S1 71 sqm / 764 sqft

#02-03 to #39-03 (21 STIRLING ROAD)
#02-17 to #39-17 (23 STIRLING ROAD)
#02-26 to #37-26 (25 STIRLING ROAD)



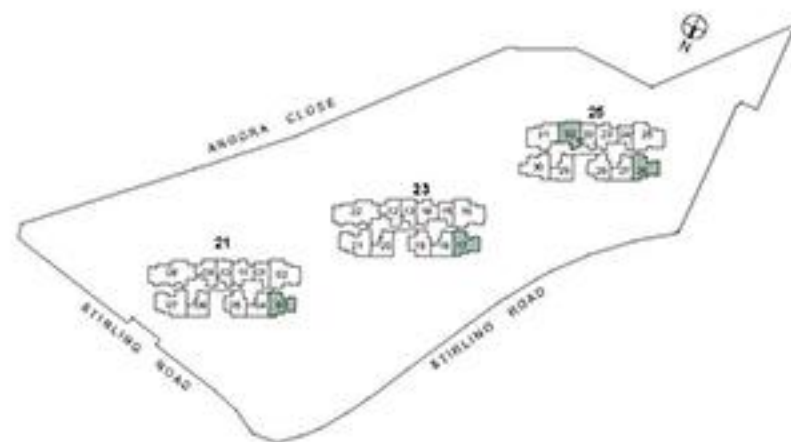
TYPE 2BR-S2 73 sqm / 786 sqft

#02-32 to #37-32 (25 STIRLING ROAD)



TYPE 2BR-S1-R 91 sqm / 980 sqft

(Inclusive of 20 sqm of void area)
#40-03 (21 STIRLING ROAD)
#40-17 (23 STIRLING ROAD)
#39-26 (25 STIRLING ROAD)



3-BEDROOM

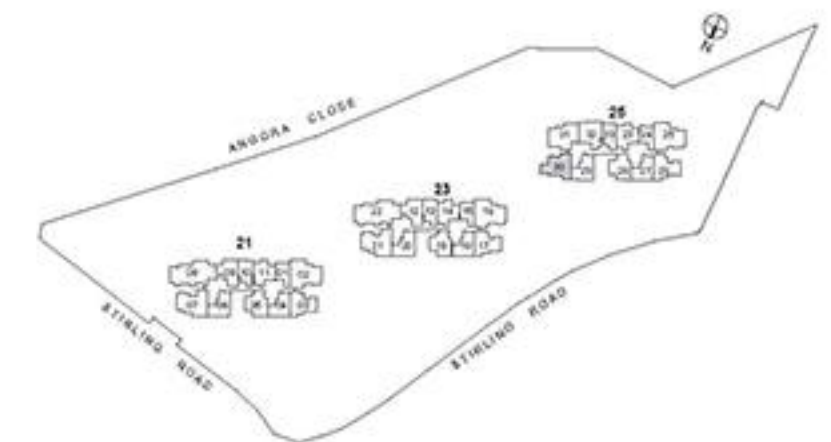
TYPE 3BR-C1 82 sqm / 883 sqft

#02-30 to #37-30 (25 STIRLING ROAD)



TYPE 3BR-C1-R 105 sqm / 1,130 sqft

(Inclusive of 23 sqm of void area)
#38-30 (25 STIRLING ROAD)



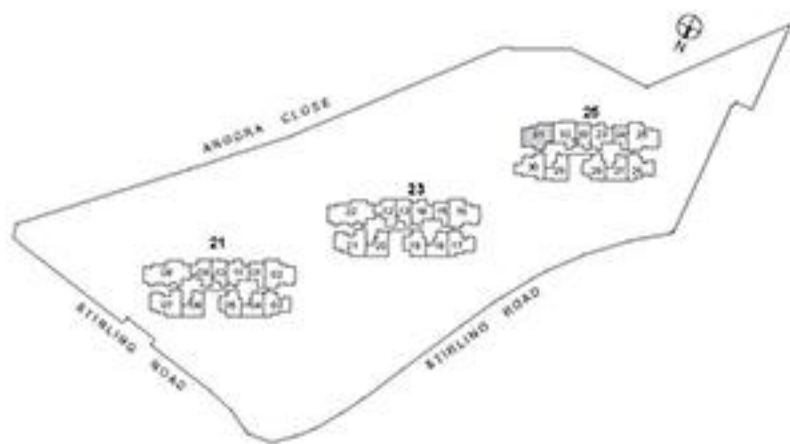
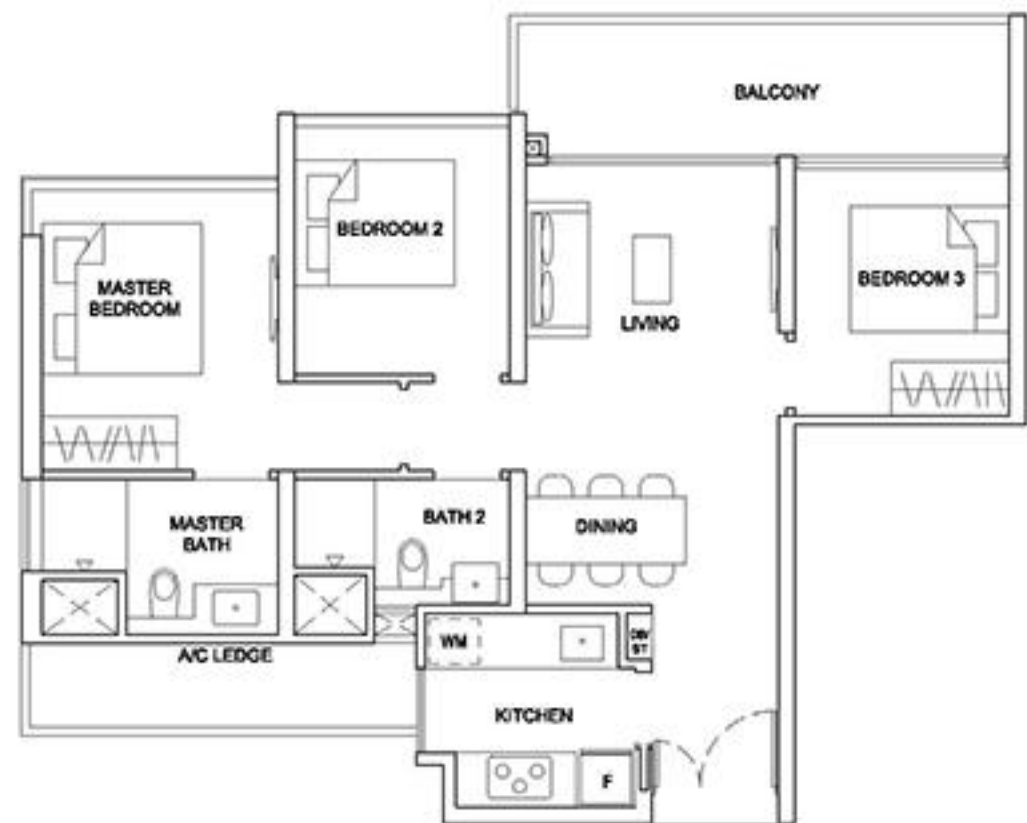
3-BEDROOM

3-BEDROOM + STORE

TYPE 3BR-C2

83 sqm / 893 sqft

#02-31 to #37-31 (25 STIRLING ROAD)

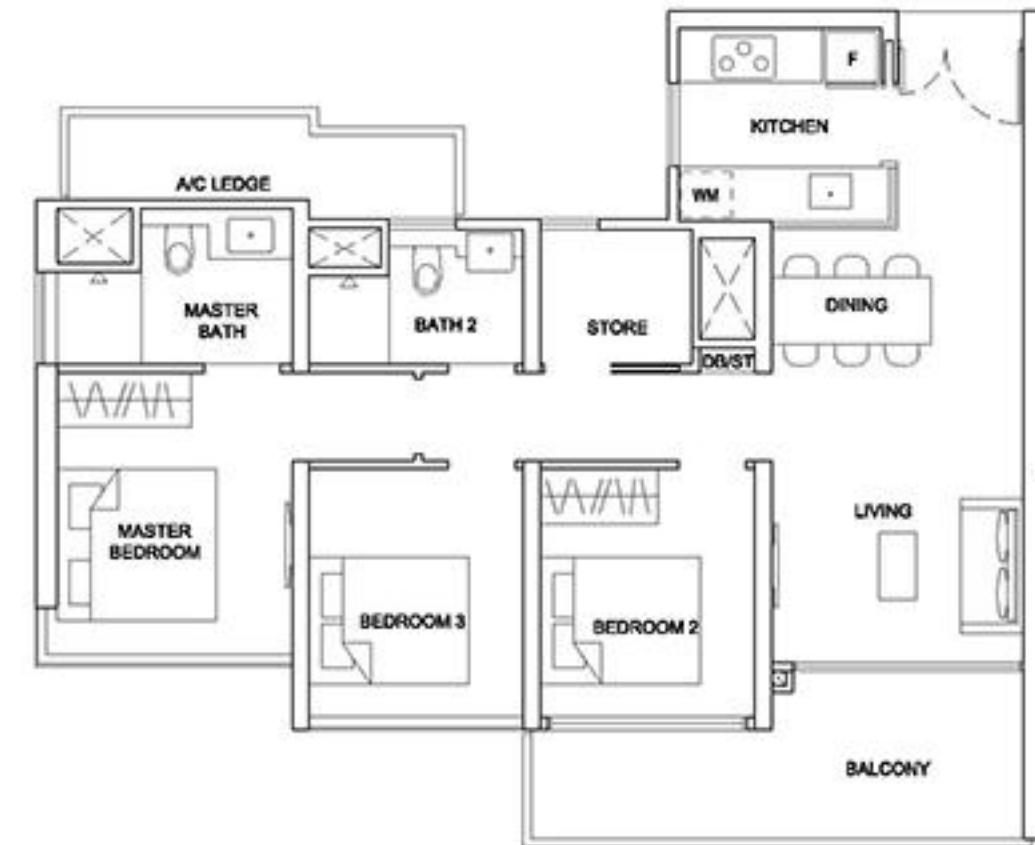


TYPE 3BR-U

91 sqm / 980 sqft

#02-07 to #39-07 (21 STIRLING ROAD)

#02-21 to #39-21 (23 STIRLING ROAD)



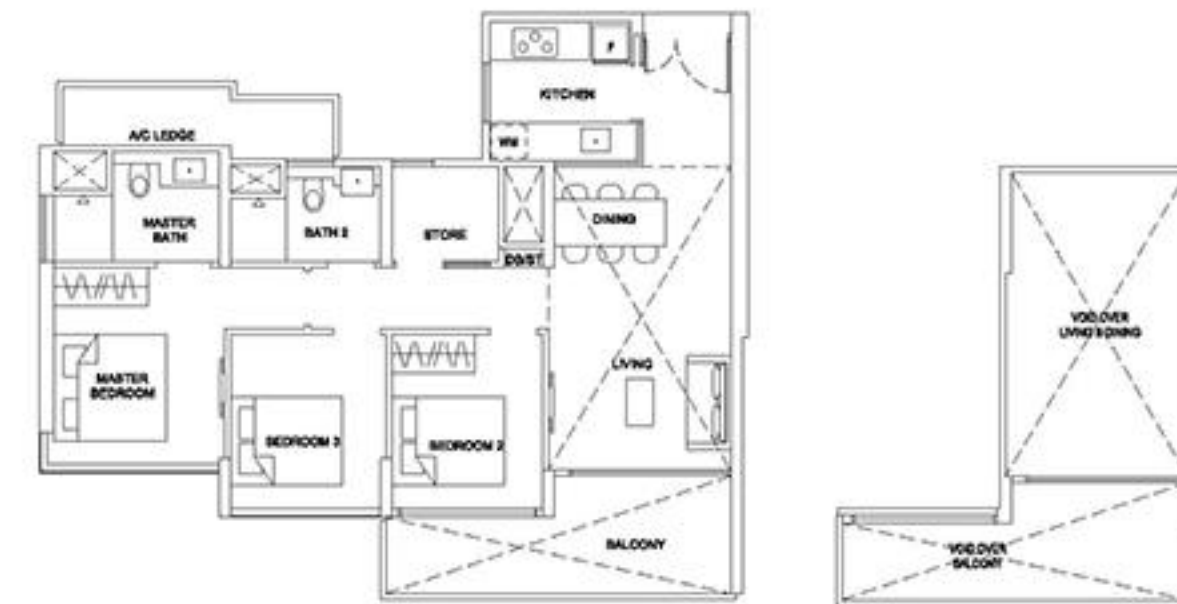
TYPE 3BR-U-R

119 sqm / 1,281 sqft

(inclusive of 28 sqm of void area)

#40-07 (21 STIRLING ROAD)

#40-21 (23 STIRLING ROAD)

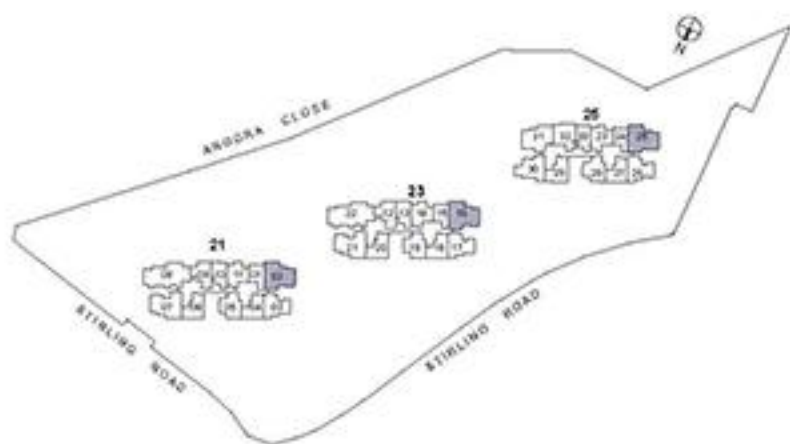


3-BEDROOM PREMIUM

TYPE 3BR-P

98 sqm / 1,055 sqft

#02-02 to #39-02 (21 STIRLING ROAD)
 #02-16 to #39-16 (23 STIRLING ROAD)
 #02-25 to #37-25 (25 STIRLING ROAD)

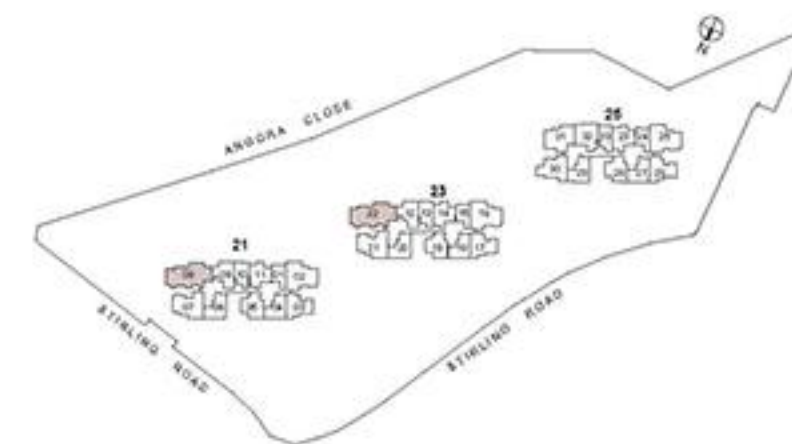


4-BEDROOM

TYPE 4BR

125 sqm / 1,346 sqft

#02-08 to #39-08 (21 STIRLING ROAD)
 #02-22 to #39-22 (23 STIRLING ROAD)



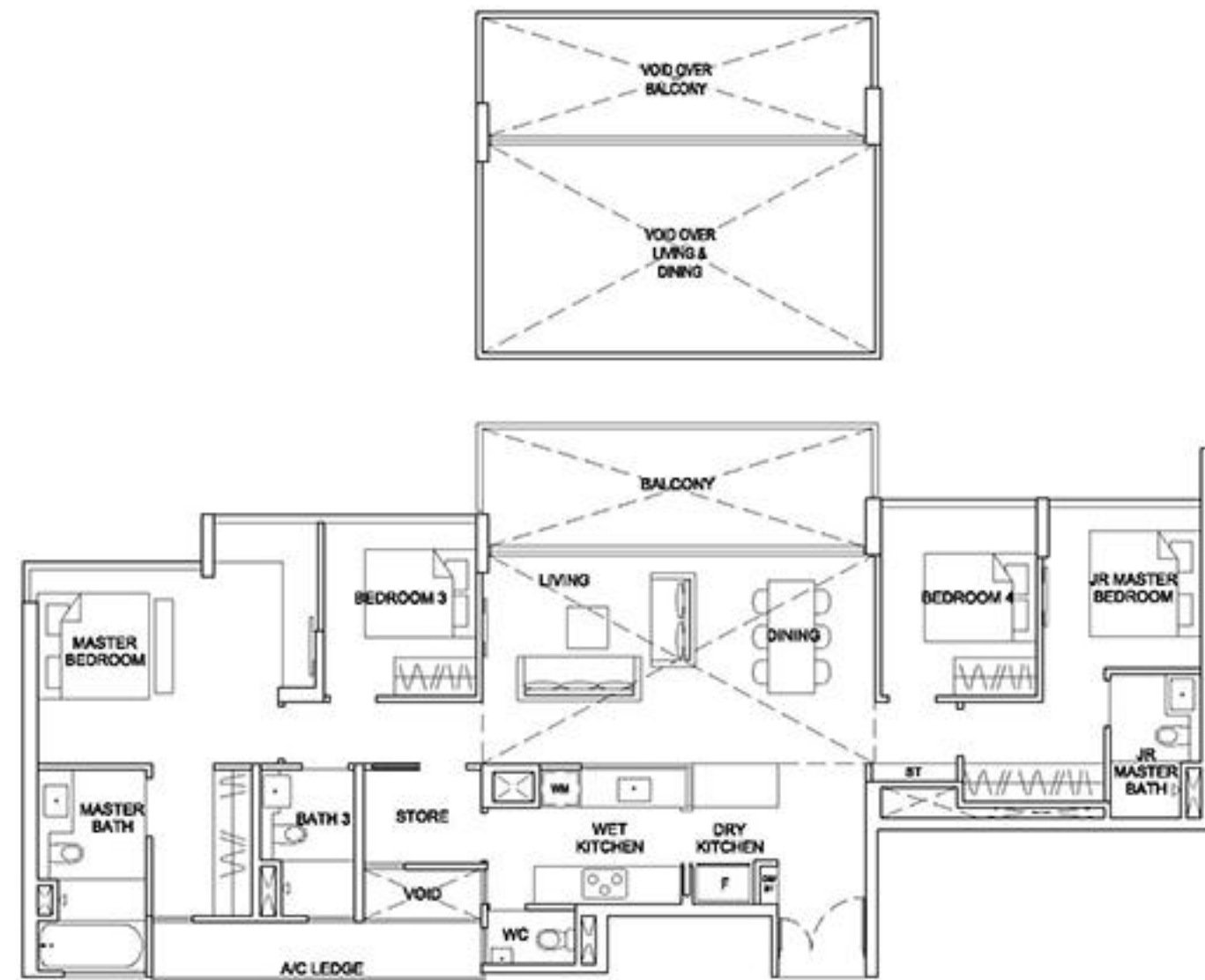
4-BEDROOM PENTHOUSE

4-BEDROOM PENTHOUSE

TYPE 4BR-PH1

182 sqm / 1,959 sqft
(Inclusive of 39 sqm of void area)

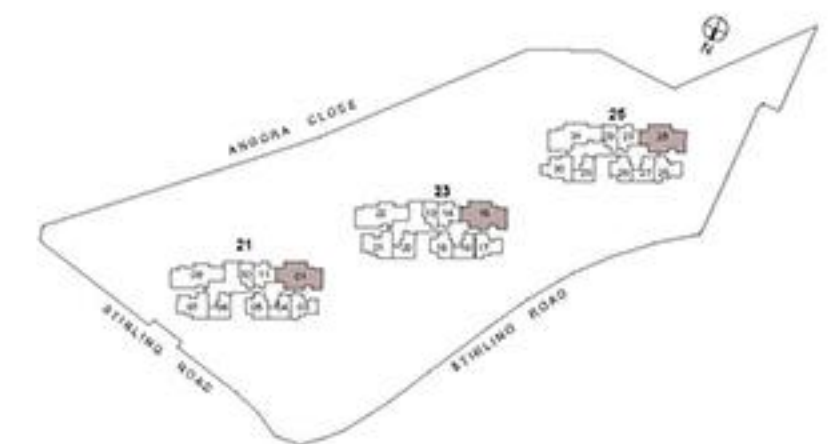
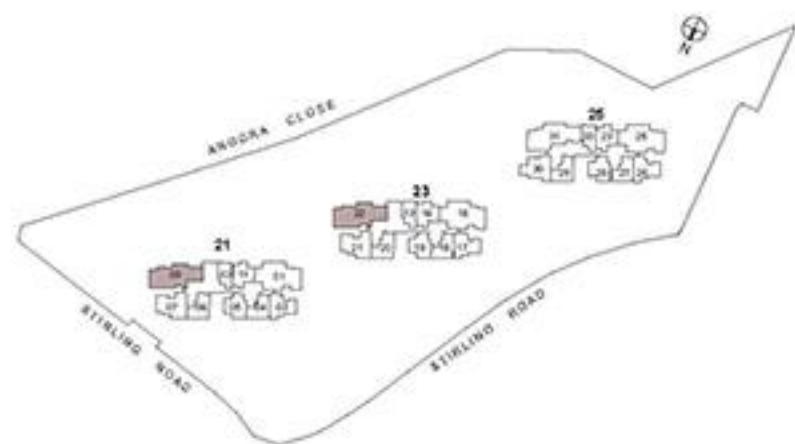
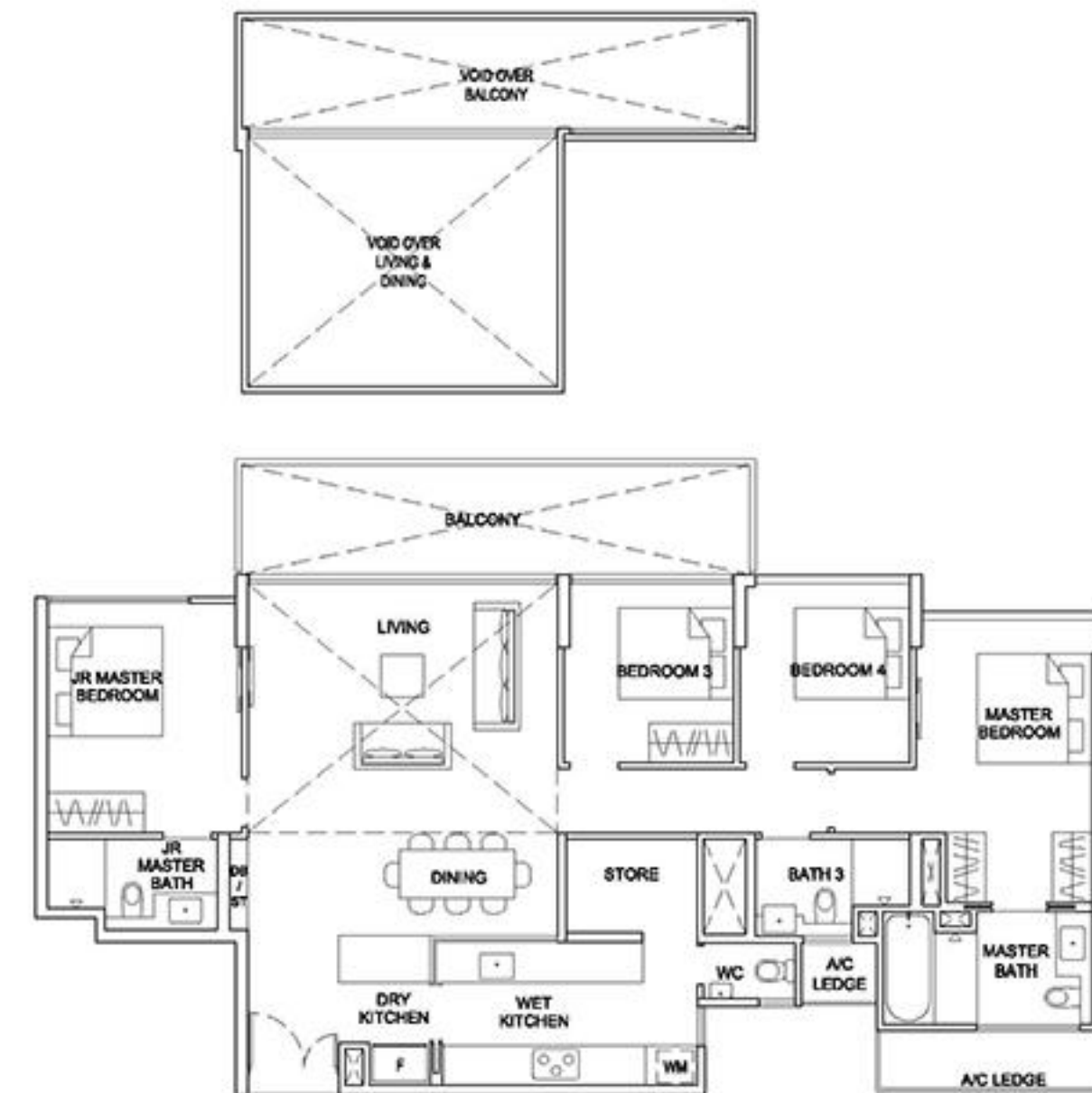
#40-08 (21 STIRLING ROAD)
#40-22 (23 STIRLING ROAD)



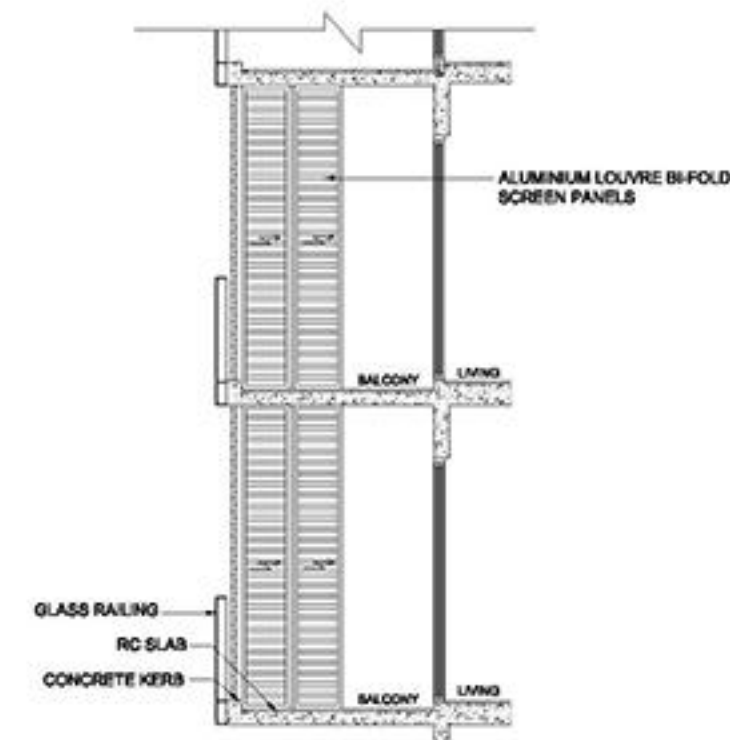
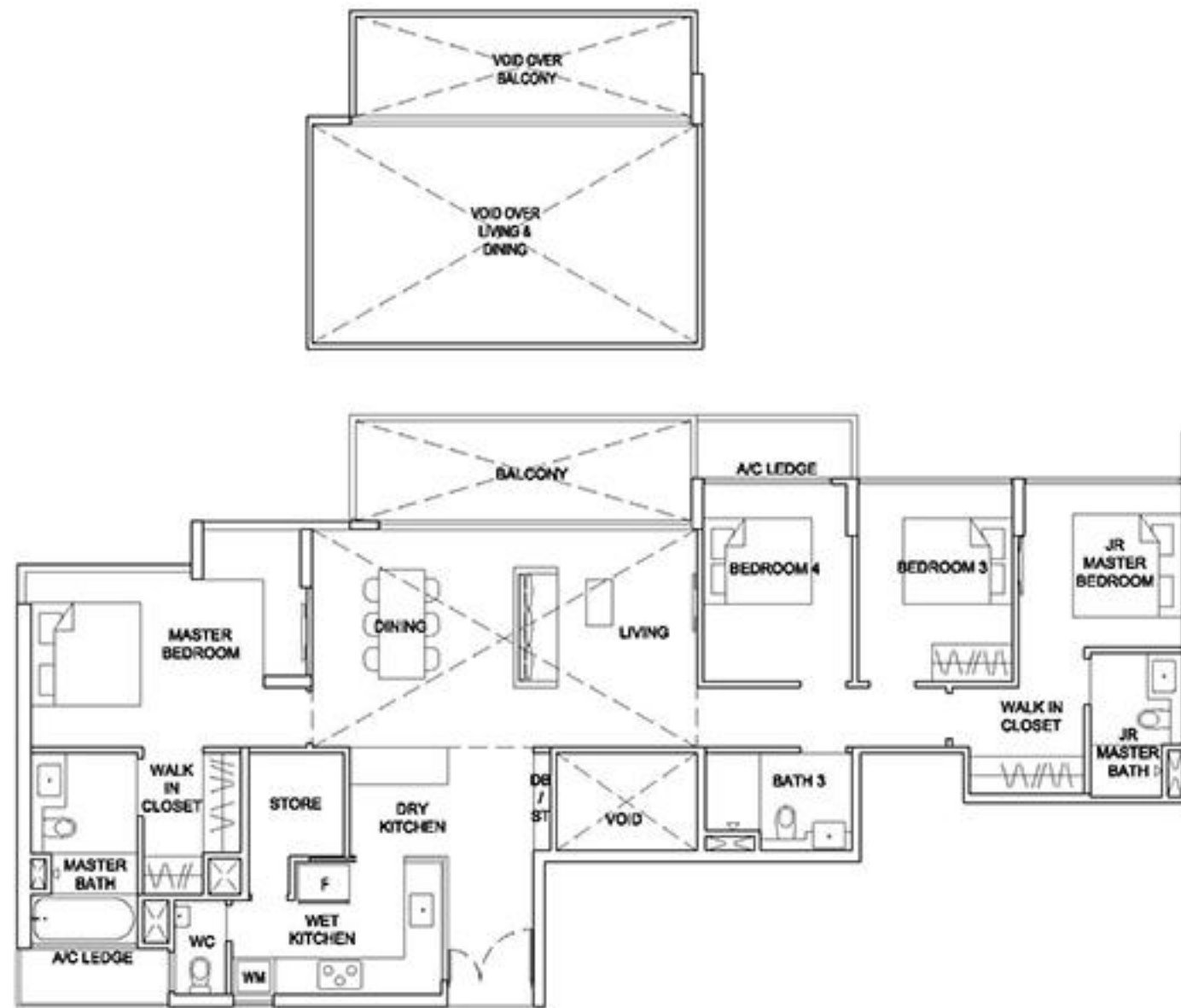
TYPE 4BR-PH2

183 sqm / 1,970 sqft
(Inclusive of 38 sqm of void area)

#40-01 (21 STIRLING ROAD)
#40-16 (23 STIRLING ROAD)
#38-25 (25 STIRLING ROAD)



TYPE 4BR-PH3
 183 sqm / 1,970 sqft
 (Inclusive of 38 sqm of void area)
 #38-31 (25 STIRLING ROAD)

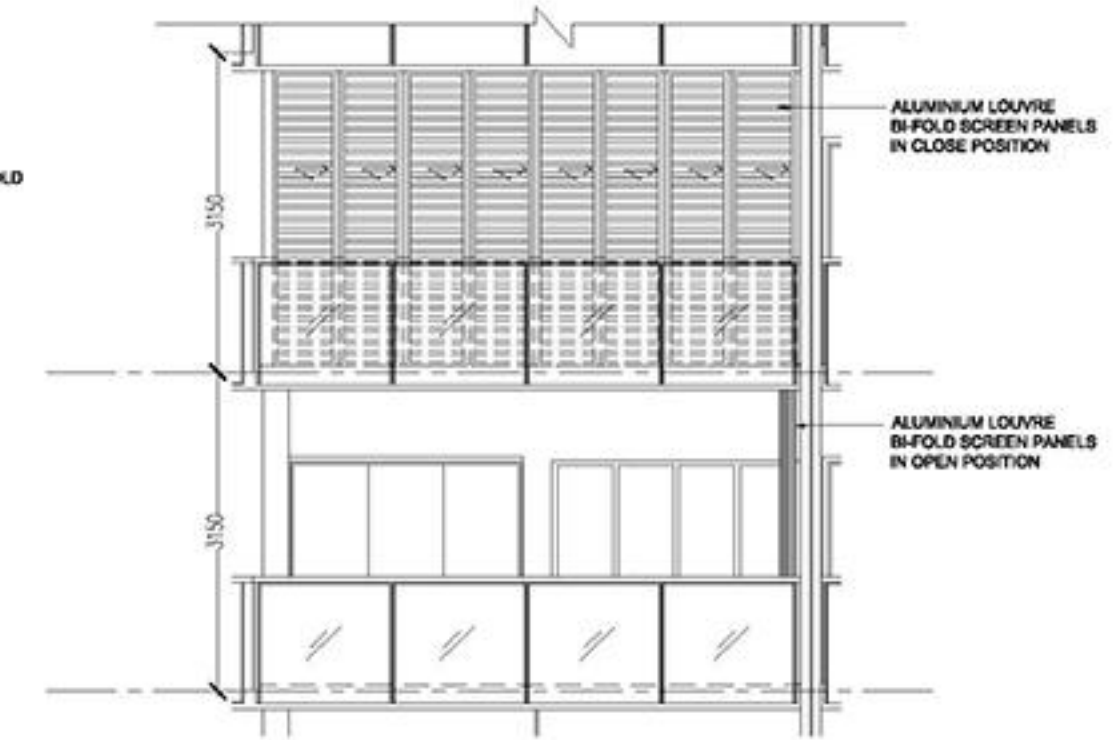


SECTION A-A (TYPICAL PLAN OF BALCONY WITH SCREEN)

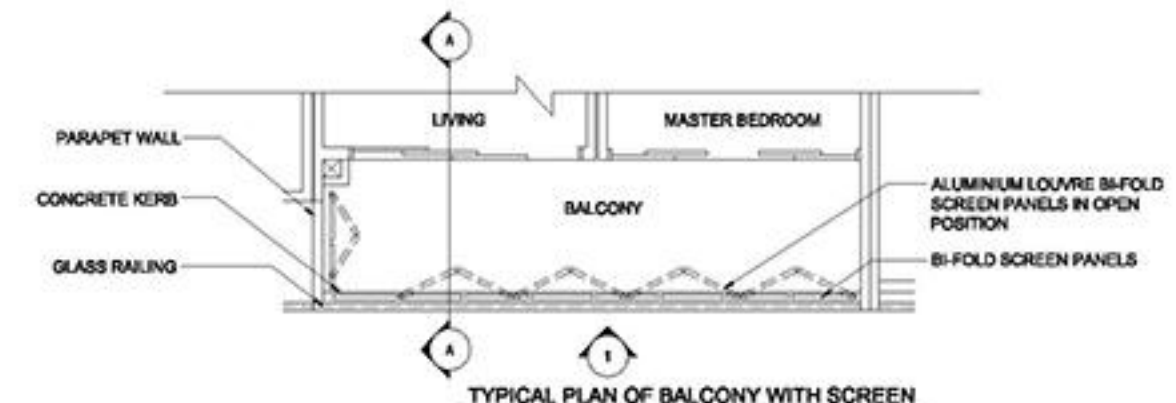
BALCONY SCREEN NOTICE

1. THE BALCONY SHALL NOT BE ENCLOSED UNLESS WITH THE APPROVED BALCONY SCREEN.
2. THE PURCHASER WILL HAVE TO BEAR THE COST OF INSTALLING THE BALCONY SCREEN IF THEY WISH TO, AFTER TAKING OVER THE UNIT.

THE PROPOSED BALCONY SHALL BE PORDUS ENOUGH TO ALLOW FOR NATURAL VENTILATION WITHIN THE BALCONY AT ALL TIMES EVEN WHEN THE SCREENS ARE FULLY DRAWN CLOSED. THE PROPOSED BALCONY SCREEN SHALL ALSO BE CAPABLE OF BEING DRAWN OPEN OR RETRACTED FULLY.



TYPICAL ELEVATION OF BALCONY WITH SCREEN



TYPICAL PLAN OF BALCONY WITH SCREEN

